

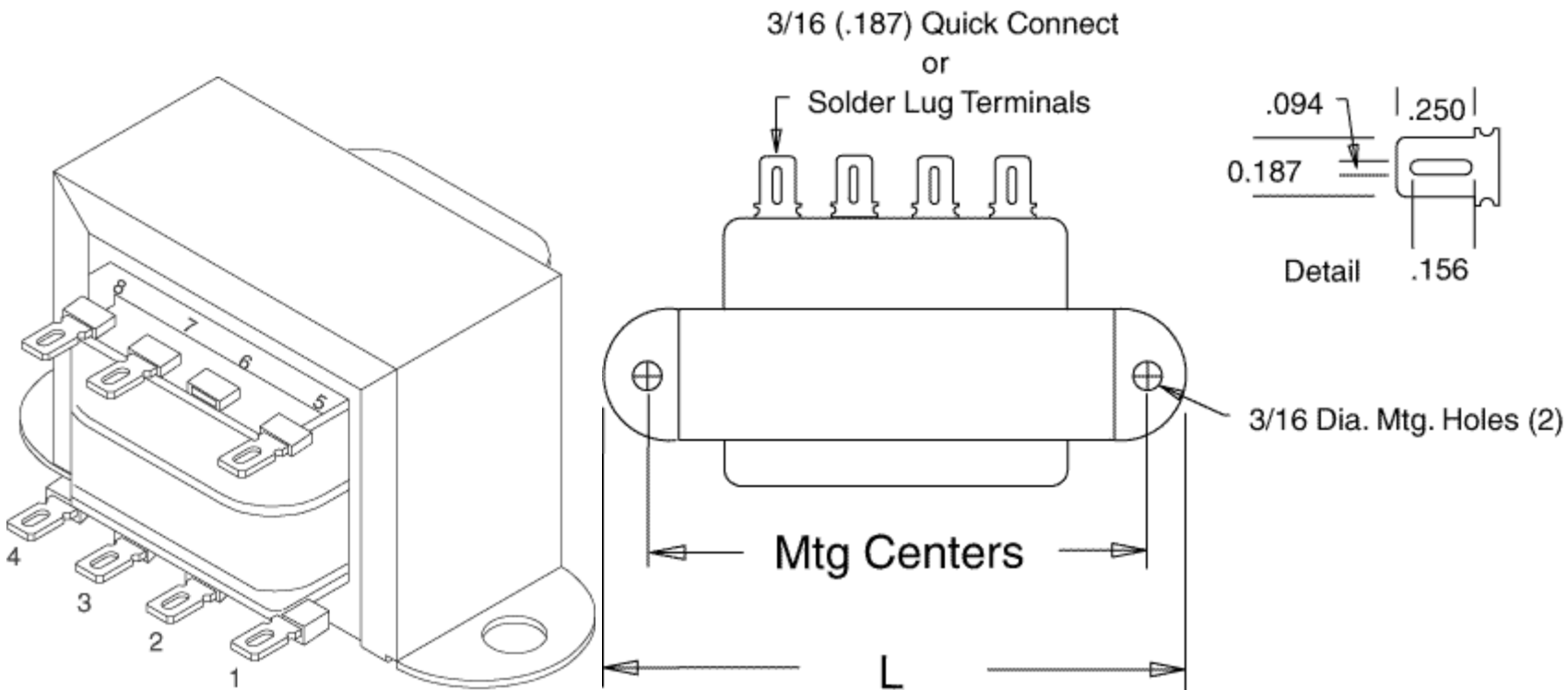
Key Features:

- Choice of two primaries: Single Primary 115VAC or Dual Primary 115/230VAC.
- Either series operates on 50/60 Hz.
- Combination solder or quick connect terminals.
- Split bobbin construction eliminates the need for an electrostatic shield.
- Hi-pot tested to 2 KV RMS.
- Economical open style, channel frame - chassis mount design
- UL recognized & CSA certified.

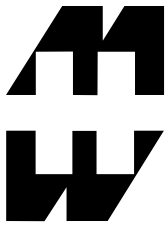
| Part Number Single Primary 115 VAC | | | Part Number Dual Primary 115/230 VAC | | | Secondary (RMS) | | VA Rating |
|--|--|--|--|---|---|-----------------|-------------------|--------------|
| | | | | | | VAC | Current (Amps) | |
| 187A10 | | | NOT AVAILABLE | - | - | 10V C.T. | 0.25 | 2.5 |
| 187B10 | | | 186B10 | | | 10V C.T. | 0.60 | 6.0 |
| 187C10 | | | 186C10 | | | 10V C.T. | 1.20 | 12.0 |
| 187D10 | | | 186D10 | | | 10V C.T. | 3.00 | 30.0 |
| 187E10 | | | 186E10 | | | 10V C.T. | 5.00 | 50.0 |

| | | | | | | | | |
|----------------|--|--|----------------|---|---|-----------|------|-------|
| 187A56 | | | NOT AVAILABLE | - | - | 56V C.T. | 0.04 | 2.5 |
| 187B56 | | | 186B56 | | | 56V C.T. | 0.11 | 6.16 |
| 187C56 | | | 186C56 | | | 56V C.T. | 0.21 | 12.3 |
| 187D56 | | | 186D56 | | | 56V C.T. | 0.53 | 30.0 |
| 187E56 | | | 186E56 | | | 56V C.T. | 1.00 | 56.0 |
| 187F56 | | | 186F56 | | | 56V C.T. | 1.80 | 100.8 |
| 187A120 | | | NOT AVAILABLE | - | - | 120V C.T. | 0.02 | 2.4 |
| 187B120 | | | 186B120 | | | 120V C.T. | 0.05 | 6.0 |
| 187C120 | | | 186C120 | | | 120V C.T. | 0.10 | 12.0 |
| 187D120 | | | 186D120 | | | 120V C.T. | 0.25 | 30.0 |
| 187E120 | | | 186E120 | | | 120V C.T. | 0.50 | 60.0 |
| 187F120 | | | 186F120 | | | 120V C.T. | 0.85 | 102.0 |

Mechanical Data:



| VA - "Model" | DIMENSIONS | | | | |
|-------------------|------------|------------------------------------|--------|-----------------|----------------------|
| | LENGTH | DEPTH (Not Including Terminals) | HEIGHT | MTG. CENTERS | DEPTH TO TERMINAL |
| | L | B | C | D | E |
| 2.34 - 2.50 - "A" | 2.06" | 1.06" | 1.18" | 1.75" | 1.435" |
| 5.60 - 6.40 - "B" | 2.37" | 1.25" | 1.37" | 2.00" | 1.625" |
| 12.0 - 12.8 - "C" | 2.81" | 1.37" | 1.62" | 2.37" | 1.725" |
| 30 - 32 - "D" | 3.25" | 1.68" | 1.93" | 2.81" | 2.055" |
| 50 - 60 - "E" | 3.68" | 1.81" | 2.25" | 3.12" | 2.185" |
| 96 - 102 - "F" | 4.03" | 2.25" | 2.56" | 3.50" | 2.625" |



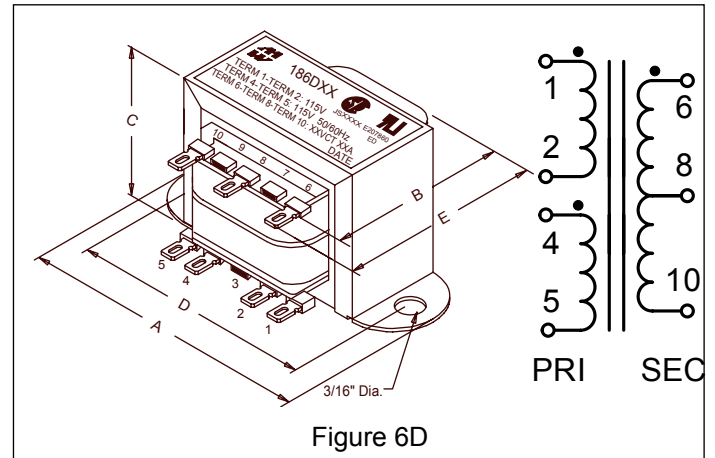
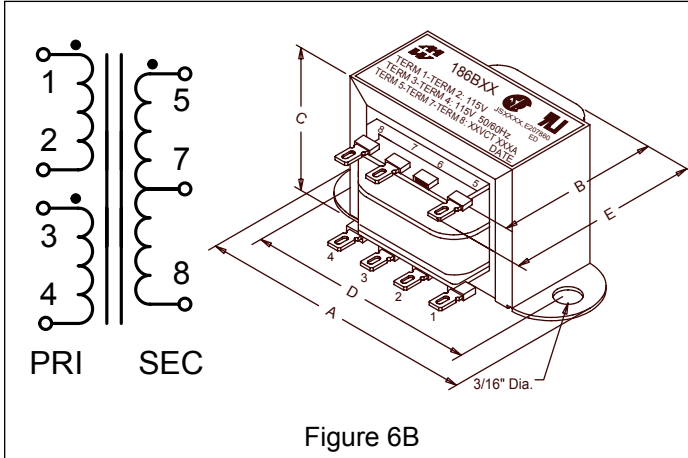
HAMMOND
MANUFACTURING™

**LOW VOLTAGE - OPEN STYLE
CHASSIS MOUNT - 186 / 187 SERIES**

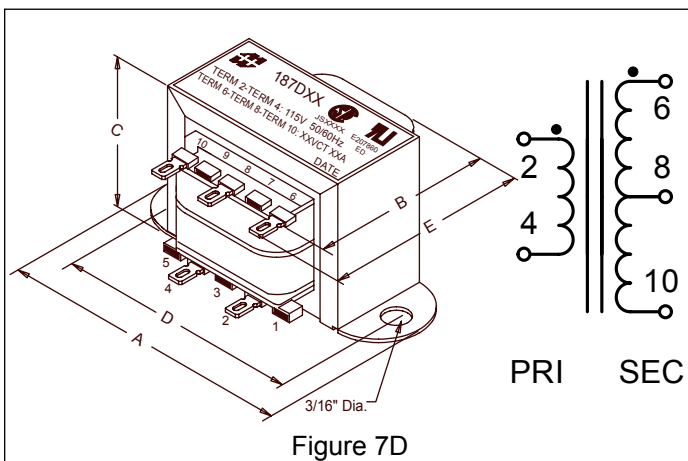
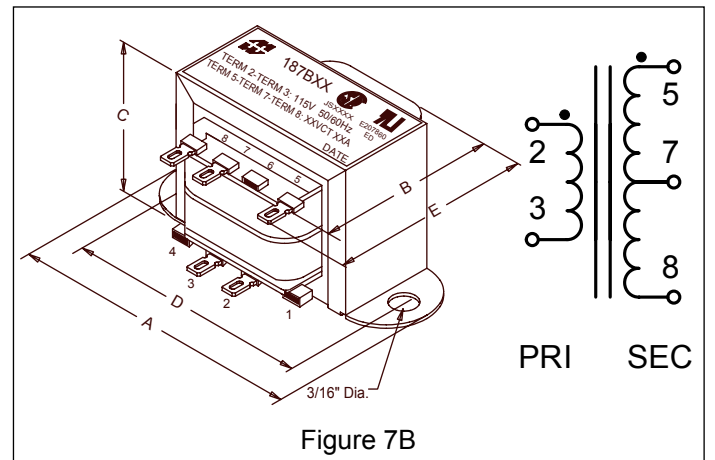
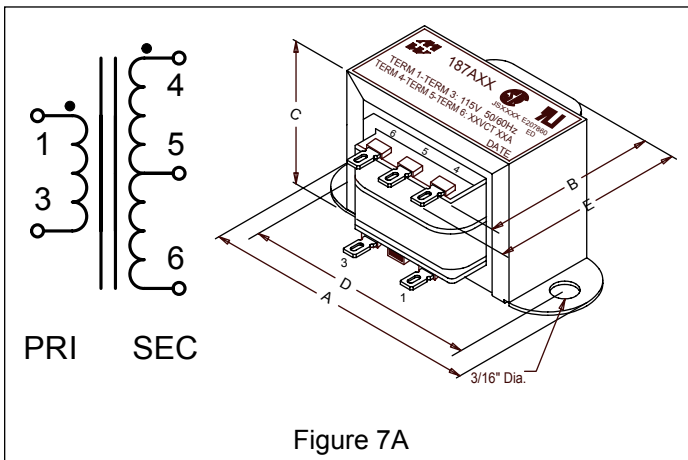
- Choice of two primaries: Single Primary 115VAC or Dual Primary 115/230 VAC.
- Either series operates on 50/60 Hz.
- Combination solder or quick connect terminals.
- Split bobbin construction eliminates need for electrostatic shield.
- Hi-pot tested to 2 KV RMS.
- Economical open style, channel frame - chassis mount design
- UL recognized & CSA certified



Transformer Schematics - Dual Primary (186 Series)



Transformer Schematics - Single Primary (187 Series)



| VA Size | Dimensions (Inches) | | | | |
|-------------|---------------------|-------------------------------------|------------|------------------|-----------------------|
| | Length (A) | Depth (Not Including Terminals) (B) | Height (C) | Mtg. Centers (D) | Depth To Terminal (E) |
| 2.34 - 2.50 | 2.06 | 1.06 | 1.18 | 1.75 | 1.435 |
| 5.60 - 6.40 | 2.37 | 1.25 | 1.37 | 2.00 | 1.625 |
| 12 - 12.8 | 2.81 | 1.37 | 1.62 | 2.37 | 1.725 |
| 30 - 32 | 3.25 | 1.68 | 1.93 | 2.81 | 2.055 |
| 50 - 60 | 3.68 | 1.81 | 2.25 | 3.12 | 2.185 |
| 98 - 102 | 4.03 | 2.25 | 2.56 | 3.50 | 2.625 |

| Part Number Single Primary 115VAC | Fig. | Part Number Dual Primary 115/230VAC | Fig. | Secondary (RMS) | | VA Rating |
|--|------|--|------|-----------------|-------------------|--------------|
| | | | | VAC | Current (Amps) | |
| 187A10 | 7A | NOT AVAILABLE | - | 10V C.T. | 0.25 | 2.5 |
| 187B10 | 7B | 186B10 | 6B | 10V C.T. | 0.60 | 6.0 |
| 187C10 | 7B | 186C10 | 6B | 10V C.T. | 1.20 | 12.0 |
| 187D10 | 7D | 186D10 | 6D | 10V C.T. | 3.00 | 30.0 |
| 187E10 | 7D | 186E10 | 6D | 10V C.T. | 5.00 | 50.0 |
| 187F10 | 7D | 186F10 | 6D | 10V C.T. | 10.00 | 100.0 |
| 187A12 | 7A | NOT AVAILABLE | - | 12.6V C.T. | 0.19 | 2.5 |
| 187B12 | 7B | 186B12 | 6B | 12.6V C.T. | 0.50 | 6.3 |
| 187C12 | 7B | 186C12 | 6B | 12.6V C.T. | 1.00 | 12.6 |
| 187D12 | 7D | 186D12 | 6D | 12.6V C.T. | 2.50 | 31.5 |
| 187E12 | 7D | 186E12 | 6D | 12.6V C.T. | 4.00 | 50.4 |
| 187F12 | 7D | 186F12 | 6D | 12.6V C.T. | 8.00 | 100.8 |
| 187A16 | 7A | NOT AVAILABLE | - | 16V C.T. | 0.15 | 2.4 |
| 187B16 | 7B | 186B16 | 6B | 16V C.T. | 0.40 | 6.4 |
| 187C16 | 7B | 186C16 | 6B | 16V C.T. | 0.80 | 12.8 |
| 187D16 | 7D | 186D16 | 6D | 16V C.T. | 2.00 | 32.0 |
| 187E16 | 7D | 186E16 | 6D | 16V C.T. | 3.50 | 56.0 |
| 187F16 | 7D | 186F16 | 6D | 16V C.T. | 6.25 | 100.0 |
| 187A20 | 7A | NOT AVAILABLE | - | 20V C.T. | 0.12 | 2.4 |
| 187B20 | 7B | 186B20 | 6B | 20V C.T. | 0.30 | 6.0 |
| 187C20 | 7B | 186C20 | 6B | 20V C.T. | 0.60 | 12.0 |
| 187D20 | 7D | 186D20 | 6D | 20V C.T. | 1.50 | 30.0 |
| 187E20 | 7D | 186E20 | 6D | 20V C.T. | 2.80 | 56.0 |
| 187F20 | 7D | 186F20 | 6D | 20V C.T. | 5.00 | 100.0 |
| 187A24 | 7A | NOT AVAILABLE | - | 24V C.T. | 0.10 | 2.4 |
| 187B24 | 7B | 186B24 | 6B | 24V C.T. | 0.25 | 6.0 |
| 187C24 | 7B | 186C24 | 6B | 24V C.T. | 0.50 | 12.0 |
| 187D24 | 7D | 186D24 | 6D | 24V C.T. | 1.25 | 30.0 |
| 187E24 | 7D | 186E24 | 6D | 24V C.T. | 2.40 | 57.6 |
| 187F24 | 7D | 186F24 | 6D | 24V C.T. | 4.00 | 96.0 |
| 187A28 | 7A | NOT AVAILABLE | - | 28V C.T. | 0.08 | 2.4 |
| 187B28 | 7B | 186B28 | 6B | 28V C.T. | 0.20 | 5.6 |
| 187C28 | 7B | 186C28 | 6B | 28V C.T. | 0.42 | 12.0 |
| 187D28 | 7D | 186D28 | 6D | 28V C.T. | 1.07 | 30.0 |
| 187E28 | 7D | 186E28 | 6D | 28V C.T. | 2.00 | 56.0 |
| 187F28 | 7D | 186F28 | 6D | 28V C.T. | 3.57 | 100.0 |
| 187A36 | 7A | NOT AVAILABLE | - | 36V C.T. | 0.06 | 2.34 |
| 187B36 | 7B | 186B36 | 6B | 36V C.T. | 0.17 | 6.12 |
| 187C36 | 7B | 186C36 | 6B | 36V C.T. | 0.35 | 12.6 |
| 187D36 | 7D | 186D36 | 6D | 36V C.T. | 0.85 | 30.6 |
| 187E36 | 7D | 186E36 | 6D | 36V C.T. | 1.50 | 54.0 |
| 187F36 | 7D | 186F36 | 6D | 36V C.T. | 2.80 | 100.8 |
| 187A48 | 7A | NOT AVAILABLE | - | 48V C.T. | 0.05 | 2.4 |
| 187B48 | 7B | 186B48 | 6B | 48V C.T. | 0.12 | 6.0 |
| 187C48 | 7B | 186C48 | 6B | 48V C.T. | 0.25 | 12.0 |
| 187D48 | 7D | 186D48 | 6D | 48V C.T. | 0.62 | 30.0 |
| 187E48 | 7D | 186E48 | 6D | 48V C.T. | 1.20 | 57.6 |
| 187F48 | 7D | 186F48 | 6D | 48V C.T. | 2.00 | 96.0 |
| 187A56 | 7A | NOT AVAILABLE | - | 56V C.T. | 0.04 | 2.5 |
| 187B56 | 7B | 186B56 | 6B | 56V C.T. | 0.11 | 6.16 |
| 187C56 | 7B | 186C56 | 6B | 56V C.T. | 0.21 | 12.3 |
| 187D56 | 7D | 186D56 | 6D | 56V C.T. | 0.53 | 30.0 |
| 187E56 | 7D | 186E56 | 6D | 56V C.T. | 1.00 | 56.0 |
| 187F56 | 7D | 186F56 | 6D | 56V C.T. | 1.80 | 100.8 |
| 187A120 | 7A | NOT AVAILABLE | - | 120V C.T. | 0.02 | 2.4 |
| 187B120 | 7B | 186B120 | 6B | 120V C.T. | 0.05 | 6.0 |
| 187C120 | 7B | 186C120 | 6B | 120V C.T. | 0.10 | 12.0 |
| 187D120 | 7D | 186D120 | 6D | 120V C.T. | 0.25 | 30.0 |
| 187E120 | 7D | 186E120 | 6D | 120V C.T. | 0.50 | 60.0 |
| 187F120 | 7D | 186F120 | 6D | 120V C.T. | 0.85 | 102.0 |